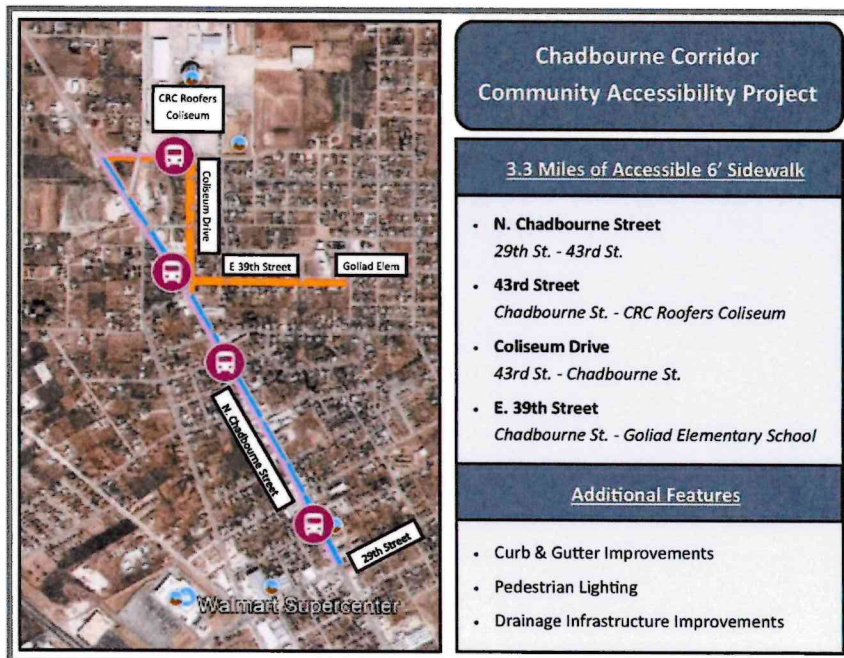
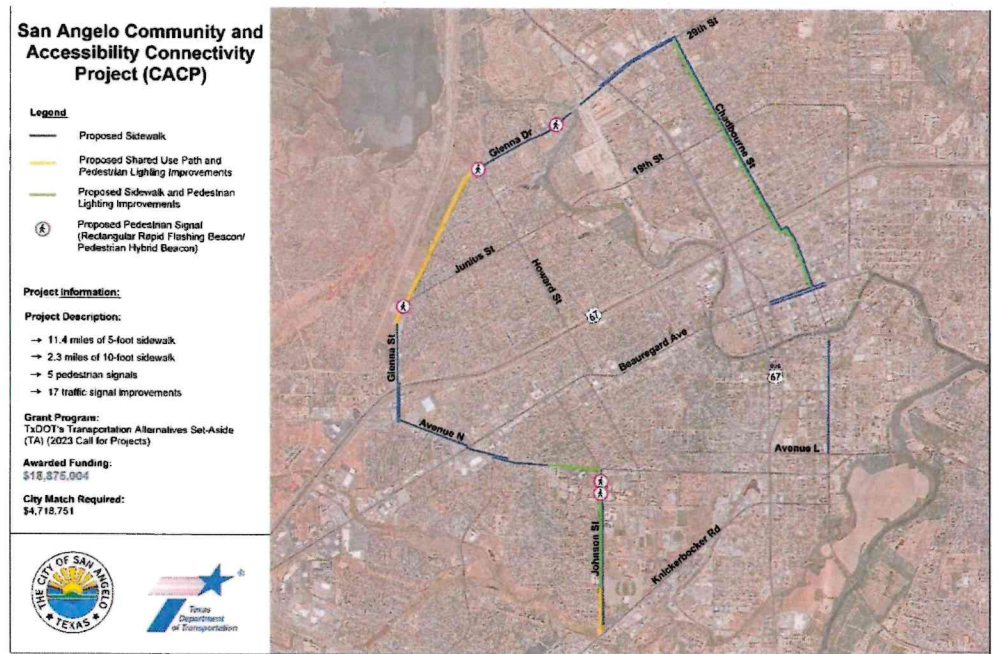


## Bicycle and Pedestrian Plan

Accommodation of bicycles and pedestrians is an ongoing process. The San Angelo MPO is working closely with the City of San Angelo to update their Bicycle/Pedestrian Plan. A Bicycle Pedestrian Safety Committee was established that is comprised of members from Angelo State University, San Angelo Independent School District, San Angelo TxDOT, Goodfellow AFB, San Angelo Fire Department, San Angelo Police Department, CVT Transit, local businesses, bicycling clubs and citizens. This group continues to put together ideas for improvements to the current plan for the City of San Angelo. A new Bicycling Facility Plan map has been designed and establishes a new future for safe cycling and pedestrian movement in San Angelo.



San Angelo Metropolitan Planning Organization  
2025-2050 Metropolitan Transportation Plan

**Transit Project List**

Transit projects funding by STIP fiscal years								
MPO Proj #	Type	Fiscal Yr	Apport. Yr	Fed Funds	State Funds	Local Funds	Other Funds	Total
<b>PT200-25-01</b>	<b>Operating</b>	<b>2025</b>	<b>2024</b>	<b>\$1,229,203</b>	<b>\$457,767</b>	<b>\$737,912</b>	<b>\$0</b>	<b>\$2,424,882</b>
<b>PT200-25-02</b>	<b>Operating</b>	<b>2025</b>	<b>2024</b>	<b>\$922,689</b>	<b>\$0</b>	<b>\$224,381</b>	<b>\$0</b>	<b>\$1,147,070</b>
PT200-25-02	Operating	2025	2024	\$744,533	\$0	\$186,133	\$0	\$930,666
<b>PT200-25-04</b>	<b>Safety/Sec</b>	<b>2025</b>	<b>2024</b>	<b>\$21,416</b>	<b>\$0</b>	<b>\$5,063</b>	<b>\$0</b>	<b>\$26,479</b>
PT200-25-05	Capital	2025	2024	\$38,000	\$0	\$9,500	\$0	\$47,500
PT200-25-06	Capital	2025	2022	\$216,683	\$0	\$0	\$32,503	\$249,186
PT200-25-07	Capital	2025	2023	\$223,243	\$0	\$0	\$33,486	\$256,729
PT200-25-08	Capital	2025	2024	\$267,377	\$0	\$0	\$40,107	\$307,484
PT200-25-09	Operating	2025	2022	\$1,439,757	\$411,365	\$813,449	\$0	\$2,664,571
PT200-25-10	Capital	2025	2022	\$13,440	\$0	\$3,360	\$0	\$16,800
PT200-25-11	Operating	2025	2020	\$613,290	\$0	\$122,658	\$0	\$735,948
<b>PT200-26-01</b>	<b>Operating</b>	<b>2026</b>	<b>2025</b>	<b>\$1,266,079</b>	<b>\$471,500</b>	<b>\$760,049</b>	<b>\$0</b>	<b>\$2,497,628</b>
<b>PT200-26-02</b>	<b>Operating</b>	<b>2026</b>	<b>2025</b>	<b>\$950,369</b>	<b>\$0</b>	<b>\$231,113</b>	<b>\$0</b>	<b>\$1,181,482</b>
<b>PT200-26-04</b>	<b>Safety/Sec</b>	<b>2026</b>	<b>2025</b>	<b>\$22,059</b>	<b>\$0</b>	<b>\$5,215</b>	<b>\$0</b>	<b>\$27,274</b>
PT200-26-05	Capital	2026	2025	\$40,660	\$0	\$10,165	\$0	\$50,825
PT200-26-06	Capital	2026	2024	\$99,000	\$0	\$24,750	\$0	\$123,750
PT200-26-07	Capital	2026	2024	\$67,700	\$0	\$16,925	\$0	\$84,625
<b>PT200-27-01</b>	<b>Operating</b>	<b>2027</b>	<b>2026</b>	<b>\$1,304,060</b>	<b>\$485,644</b>	<b>\$782,851</b>	<b>\$0</b>	<b>\$2,572,555</b>
<b>PT200-27-02</b>	<b>Operating</b>	<b>2027</b>	<b>2026</b>	<b>\$978,881</b>	<b>\$0</b>	<b>\$93,135</b>	<b>\$0</b>	<b>\$1,072,016</b>
<b>PT200-27-03</b>	<b>Safety/Sec</b>	<b>2027</b>	<b>2026</b>	<b>\$23,871</b>	<b>\$0</b>	<b>\$5,970</b>	<b>\$0</b>	<b>\$29,841</b>
PT200-27-05	Capital	2027	2026	\$43,506	\$0	\$10,673	\$0	\$54,179
<b>PT200-28-01</b>	<b>Operating</b>	<b>2028</b>	<b>2027</b>	<b>\$1,343,182</b>	<b>\$500,214</b>	<b>\$806,337</b>	<b>\$0</b>	<b>\$2,649,733</b>



San Angelo Metropolitan Planning Organization  
2025-2050 Metropolitan Transportation Plan

PT200-28-02	Operating	2028	2027	\$1,008,247	\$0	\$95,929	\$0	\$1,104,177
PT200-28-03	Safety/Sec	2028	2027	\$24,587	\$0	\$6,149	\$0	\$30,736
PT200-28-05	Capital	2028	2027	\$46,551	\$0	\$11,420	\$0	\$57,971

**2025-2028 TIP**

**August 2025 Amendment**

### Grouped Projects

Finally, some of the most necessary transportation work in the city may be completed by TxDOT without a specific listing of the project in the MTP. The table shown below is the approved grouped project category descriptions. This table shows the potential projects that would not be required to be listed individually in the MTP. These projects are funded out of the Category 1, 11, and Proposition 1 allocation.

### Grouped Project Control Job Numbers (CSJ) by Category

PROPOSED CSJ	GROUPED PROJECT CATEGORY	DEFINITION
5000-00-950	PE - Preliminary Engineering	Preliminary Engineering for any project except added capacity projects in a nonattainment area. Includes activities which do not involve or lead directly to construction, such as planning and research activities; grants for training engineering to define the elements of a proposed action or alternatives so that social, economic, and environmental effects can be assessed.
5000-00-951	Right of Way Acquisition	Right of Way acquisition for any project except added capacity projects in a nonattainment area. Includes relocation assistance, hardship acquisition and protective buying.
5000-00-952 5000-00-957 5000-00-958	Preventative Maintenance and Rehabilitation	Projects to include pavement repair to preserve existing pavement so that it may achieve its designed loading, includes seal coats, overlays, resurfacing restoration, and rehabilitation done with existing ROW. Also includes modernization of a highway by reconstruction, adding shoulders or adding auxiliary lanes (e.g., parking, weaving, turning, climbing, non-added capacity) or drainage improvements associated with rehabilitation.
5000-00-954	Railroad Grade Separations	Projects to construct or replace existing highway-railroad grade crossing and to rehabilitate functionally obsolete or structurally deficient bridges.
5800-00-950	Safety	Projects to include the construction or replacement/rehabilitation of guard rails, median barriers, crash cushions, pavement markings, skid treatments, medians, lighting improvements, highway signs, curb ramps, railroad/highway crossing warning devices, fencing intersection improvements (e.g. turn lanes), signalization projects and interchange modifications. Also includes funded via the Federal Hazard Elimination Program, Federal Railroad Signal Safety Program, or Access Managements Projects, except those that result in added capacity.
5000-00-956	Landscaping	Project consisting of typical right-of-way landscape development, establishment, and aesthetic improvements to include any associated erosion control and environmental mitigation activities.
5800-00-915	Intelligent Transportation System Deployment	Highway traffic operation improvement projects including the installation of ramp metering control devices, variable message signs, traffic monitoring equipment and projects in the Federal ITS/VHS programs.
5000-00-916	Bicycle and Pedestrian	Construction or rehabilitation of bicycle and pedestrian lanes, paths and facilities.
5000-00-917	Safety Rest Areas and Truck Weigh Stations	Construction and improvement of rest areas and truck weigh stations.

San Angelo Metropolitan Planning Organization  
2025-2050 Metropolitan Transportation Plan

<b>4(3C)</b>	Connectivity	\$10,240,572	\$10,240,572
<b>Total</b>			\$75,140,917
<b>2025-2050 Plan Total Funding Projections</b>			
<b>Category 2(U)</b>	Urban Corridor	\$85,258,548	\$85,258,548
<b>Category 4(3C)</b>	Regional Connectivity	\$18,205,890	\$18,205,890
<b>Total</b>			<b>\$103,464,438</b>

### Transit Funds

Transit funding has shown a historic increase from FTA over the years of approximately 5%. As a result, the assumption was made that this will remain the same throughout the length of this plan.

<b>TRANSIT PROJECT FUNDING PROJECTION</b>					
<b>YEAR</b>	<b>FEDERAL</b>	<b>STATE</b>	<b>LOCAL</b>	<b>OTHER</b>	<b>TOTAL</b>
2025	\$4,974,272	\$869,132	\$2,369,337	\$106,096	\$8,318,837
2026	\$2,445,867	\$471,500	\$1,048,217	\$0	\$3,965,584
2027	\$2,350,318	\$485,644	\$892,629	\$0	\$3,728,591
2028	\$2,422,567	\$500,214	\$919,835	\$0	\$3,842,616
2029	\$2,638,979	\$525,225	\$1,080,893	\$0	\$4,245,096
2030	\$2,764,909	\$551,486	\$1,134,937	\$0	\$4,451,333
2031	\$3,363,376	\$579,061	\$1,191,684	\$0	\$5,134,120
2032	\$3,525,159	\$608,014	\$1,251,268	\$0	\$5,384,441
2033	\$3,694,840	\$638,414	\$1,313,832	\$0	\$5,647,086
2034	\$3,872,808	\$670,335	\$1,379,523	\$0	\$5,922,667
2035	\$4,059,471	\$703,852	\$1,448,500	\$0	\$6,211,823
2036	\$4,255,258	\$739,044	\$1,520,925	\$0	\$6,515,227
2037	\$4,460,619	\$775,997	\$1,596,971	\$0	\$6,833,586
2038	\$4,676,025	\$814,796	\$1,676,819	\$0	\$7,167,641
2039	\$4,901,974	\$855,536	\$1,760,660	\$0	\$7,518,170
2040	\$5,138,984	\$898,313	\$1,848,693	\$0	\$7,885,990
2041	\$5,387,602	\$943,229	\$1,941,128	\$0	\$8,271,958
2042	\$5,648,400	\$990,390	\$2,038,184	\$0	\$8,676,975
2043	\$5,921,982	\$1,039,910	\$2,140,094	\$0	\$9,101,985
2044	\$6,208,977	\$1,091,905	\$2,247,098	\$0	\$9,547,981
2045	\$6,510,049	\$1,146,500	\$2,359,453	\$0	\$10,016,003
2046	\$6,825,893	\$1,203,826	\$2,477,426	\$0	\$10,507,145
2047	\$7,167,188	\$1,264,017	\$2,601,297	\$0	\$11,032,502
2048	\$7,525,547	\$1,327,218	\$2,731,362	\$0	\$11,584,127
2049	\$7,901,824	\$1,393,578	\$2,867,930	\$0	\$12,163,333
2050	\$8,296,916	\$1,463,257	\$3,011,327	\$0	\$12,771,500
	<b>\$126,743,104</b>	<b>\$22,139,028</b>	<b>\$46,920,623</b>	<b>\$106,096</b>	<b>\$196,205,851</b>



San Angelo Metropolitan Planning Organization  
2025-2050 Metropolitan Transportation Plan

2025-2028 Transit Funds					
Fund Source	Section 5307: Operations	Section 5307: ADA Service	Section 5307: Stop Shelter	Section 5307: Bus & Facility Security	Total
<b>Federal</b>	\$7,209,641	\$3,682,030	\$168,717	\$91,933	\$11,152,321
<b>State</b>	\$2,326,490	\$0	\$0	\$0	\$2,326,490
<b>Local</b>	\$4,517,878	\$606,310	\$41,758	\$22,397	\$5,188,343
<b>Other</b>	\$0	\$0	\$0	\$0	\$0
<b>Total</b>	<b>\$14,054,009</b>	<b>\$4,288,340</b>	<b>\$210,475</b>	<b>\$114,330</b>	<b>\$18,667,154</b>
<b>Fund Source</b>	<b>Section 5339: Bus Purchase</b>				
<b>Federal</b>	<b>\$707,303</b>				<b>\$707,303</b>
<b>State</b>					
<b>Local</b>					
<b>Other</b>	<b>\$106,096</b>				<b>\$106,096</b>
<b>Total</b>	<b>\$813,399</b>				<b>\$813,399</b>
<b>Total 2025-2028</b>	<b>\$15,680,807</b>	<b>\$4,288,340</b>	<b>\$210,475</b>	<b>\$114,330</b>	<b>\$20,293,952</b>

2029-2050 Transit Funds					
Fund Source	Section 5307: Operations	Section 5307: ADA Service	Section 5307: Capital Lease	Section 5307: Bus & Facility Security	Total
<b>Federal</b>	\$66,067,913	\$47,748,530	\$0	\$900,337	\$114,716,780
<b>State</b>	19,812,538	\$0	\$0	\$0	\$19,812,538
<b>Local</b>	\$33,268,983	\$8,395,659	\$0	\$322,963	\$41,987,605
<b>Other</b>	\$0	\$0	\$0	\$0	\$0
<b>Total</b>	<b>\$119,149,434</b>	<b>\$56,144,189</b>	<b>\$0</b>	<b>\$1,223,300</b>	<b>\$176,516,923</b>
<b>Plan totals</b>					
2025-2050 Plan Total Transit Funds					
<b>Federal</b>	\$74,140,114	\$51,430,580	\$0	\$992,270	\$126,562,964
<b>State</b>	\$22,139,028	\$0	\$0	\$0	\$22,139,028
<b>Local</b>	\$37,825,259	\$9,001,969	\$0	\$345,360	\$47,172,588
<b>Other</b>	\$106,096	\$0	\$0	\$0	\$106,096
<b>Total</b>	<b>\$134,210,497</b>	<b>\$60,432,549</b>	<b>\$0</b>	<b>\$1,337,630</b>	<b>\$195,980,676</b>



August 2025 Amendment